

# Masseter muscle thickness and maxillary dental arch width

Stavros Kiliaridis\*, Ioanna Georgiakaki\* and Christos Katsaros\*\*,\*

Departments of Orthodontics, \*University of Geneva, Switzerland and \*\*Göteborg University, Sweden, and

\*\*\*Department of Orthodontics and Oral Biology, University Medical Centre Nijmegen, The Netherlands

**SUMMARY** The purpose of the present investigation was to study the relationship between the ultrasonographic thickness of the masseter muscle and the width of the maxillary dental arch. The sample comprised 60 consecutive orthodontic patients (37 females, 23 males), 7–18 years of age with a Class I relationship and minor malocclusion. The thickness of the masseter muscle was measured ultrasonographically. Recordings were performed bilaterally with the muscles both in relaxation and under contraction. Maxillary intermolar width was measured with an electronic calliper as the distance between the palatal surfaces of the first permanent molars.

Intermolar width showed no association with age and gender. However, masseter muscle thickness showed a direct, significant ( $P < 0.0001$ ) association with these two factors together, i.e. the masseter muscle was thicker in older individuals and in males. In the female group, maxillary intermolar width showed a direct, significant association with masseter thickness both during contraction ( $P < 0.006$ ) and relaxation ( $P < 0.013$ ), i.e. females with thicker masseter muscles had a wider maxillary dental arch. In the male group, however, no significant relationship was found between maxillary intermolar width and masseter thickness. The findings of this study indicate that the functional capacity of the masticatory muscles may be considered as one of the factors influencing the width of the maxillary dental arch.

## Introduction

Various studies have shown an association between the functional capacity of the masticatory muscles and craniofacial morphology. Individuals with a short facial configuration have high electromyographic activity or a high level of bite force or *vice versa* (Ingervall, 1976; Ingervall and Helkimo, 1978; Proffit *et al.*, 1983; Kiliaridis *et al.*, 1993; Ueda *et al.*, 1998, 2000).

Muscle size as measured with imaging techniques *in vivo* was also found to correlate with craniofacial parameters. The relationship between masticatory muscle thickness and anterior face height seems to be negative (Kiliaridis and Kälébo, 1991; Bakke *et al.*, 1992; van Spronsen *et al.*, 1992; Raadsheer *et al.*, 1996; Benington *et al.*, 1999), i.e. individuals with thinner masticatory muscles have longer faces. Such an association has been found for the masseter (Kiliaridis and Kälébo, 1991; Bakke *et al.*, 1992; van Spronsen *et al.*, 1992; Raadsheer *et al.*, 1996; Benington *et al.*, 1999), and the anterior temporal and medial pterygoid muscles (van Spronsen *et al.*, 1992). On the other hand, a positive association between cross-sectional areas or thickness of masticatory muscles and craniofacial widths has been reported, i.e. subjects with thicker masticatory muscles have broader faces. The muscles found to be involved in this relationship were the temporal muscle (Weijjs and Hillen, 1986; van Spronsen *et al.*, 1991), the masseter (Weijjs and Hillen, 1986; Hannam and Wood, 1989; Raadsheer *et al.*, 1996), and the medial pterygoid muscles (Hannam and Wood, 1989).

Since there is an association between masticatory muscle size and craniofacial width, a similar association might be expected to exist regarding dental arch width. A recent study on dry skulls of modern Japanese males showed that the lower molars were more lingually inclined in skulls with a long facial configuration (Masumoto *et al.*, 2001). However, the role of the masticatory muscles in the transverse width of the dental arches is not clear.

The purpose of the present investigation was to study the relationship between the ultrasonographic thickness of the masseter muscle and the width of the maxillary dental arch.

## Subjects and methods

### Subjects

The sample of the present study comprised 60 consecutive orthodontic patients (37 females, 23 males), 7–18 years of age, enrolled from an orthodontic practice. The mean age of the subjects in the female group was 12.3 years (SD = 2.6), and for the male group 11.5 years (SD = 2.6).

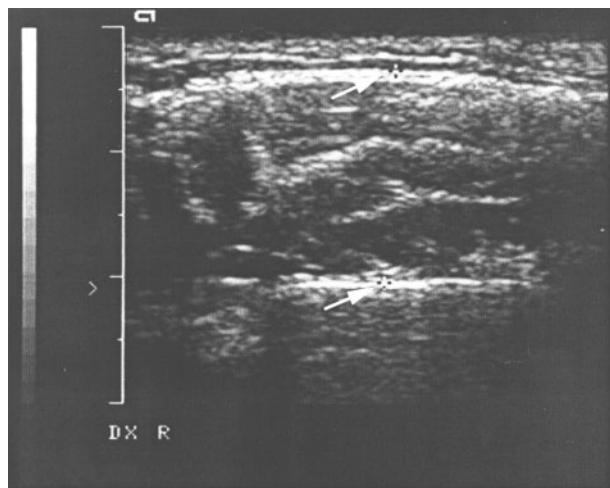
In order to exclude factors that might influence maxillary dental arch width or muscle thickness (vertical, sagittal, or transversal skeletal malocclusion, posterior crossbite, or functional problems) only those with a Class I malocclusion were selected. These subjects were in need of only minor orthodontic treatment in the anterior part of one or both dental arches.

### Registration methods

**Measurement of masseter muscle thickness (Figure 1).** The thickness of the masseter muscle was measured with reference to the method of Kiliaridis and Kälébo (1991). All subjects were examined by the same operator (IG), using a real time scanner (Scanner 480, Pie Medical, Maastricht, The Netherlands) with a 7.5 MHz linear array transducer. The participants were seated in an upright position with their heads in a natural position. To avoid tissue compression, a generous amount of gel was used under the probe. Care was taken to orientate the transducer perpendicular to the ramus, since oblique scanning exaggerates the thickness of the muscle. For that purpose, the angle of scanning was altered until the best echo of the mandibular ramus was achieved. The measurement site was at the thickest part of the masseter close to the level of the occlusal plane, halfway between the zygomatic arch and gonial angle, approximately at the centre of the mediolateral distance of the ramus.

Recordings were performed bilaterally with the muscles both during relaxation and under contraction (during maximal clenching in the intercuspal position).

The imaging and the measurements were performed twice, with an interval of at least 5 minutes between the two recordings. The thickness per side was calculated as the mean of the two measurements. For each individual the mean thickness of the left and right side was used. The measurements were made directly from the image



**Figure 1** Transverse ultrasound scan of the masseter muscle during contraction. The wide white structure at the top depicts the skin echo, and the narrow white line below (upper arrow) the outer fascia of the masseter muscle. Although difficult to recognize in the photograph, real-time scanning distinguishes between skin and fascia. The intensive white echo at the centre of the image (lower arrow) is the echo of the lateral surface of the ramus. The masseter is seen as a dark area between the fascia and the lateral surface of the ramus. The two crosses (next to the arrows) show the positioning of the electronic calliper used to measure the thickness of the muscle.

at the time of scanning with a readout of distance to the nearest 0.1 mm. The real-time scans were then printed on film paper by a videocopy printer (Mitsubishi, model P66E, Tokyo, Japan).

**Measurement of maxillary arch width.** Alginate impressions were taken from all subjects and models were cast in dental stone. Maxillary intermolar width was measured with an electronic calliper as the distance between the palatal surfaces of the first permanent molars. The smallest possible distance was always recorded. This measurement was selected to express the maxillary arch width, since it can be performed in individuals of all age groups.

### Statistical methods

Multiple regression analysis was used to show an association between:

1. intermolar width with age and gender
2. masseter muscle thickness with age and gender
3. intermolar width with masseter muscle thickness and age.

### Error of the method

Double recordings on 20 subjects were performed in order to evaluate the method error both for the ultrasonographic thickness of the masseter and for the maxillary intermolar width. The time interval between first and second recordings was 4 weeks. The combined method error ( $Se$ ) was calculated using Dahlberg's formula  $Se = \sqrt{\sum d^2 / 2n}$ , where  $d$  is the difference between the two recordings of the individual and  $n$  the number of double recordings (Dahlberg, 1940). The error for masseter thickness was small, not exceeding 0.3 mm in relaxation and 0.2 mm during contraction, whereas the error for the maxillary intermolar width was found to be 0.2 mm.

### Results

The mean maxillary intermolar width was 32.1 mm ( $SD = 1.8$ ) in the female group and 33.0 mm ( $SD = 2.7$ ) in the male group. The mean masseter muscle thickness was 11.6 mm ( $SD = 1.4$ ) in relaxation and 11.9 mm ( $SD = 1.6$ ) during contraction in the female group versus 12.1 mm ( $SD = 2.2$ ) in relaxation and 12.4 mm ( $SD = 2.2$ ) during contraction in the male group. For both maxillary intermolar width and masseter muscle thickness the standard deviation in the male group was greater than in the female group.

Intermolar width showed no association with age and gender. Masseter muscle thickness showed a direct, significant association with these two factors together (Table 1), i.e. the masseter muscle was thicker in older individuals and in males.

**Table 1** Multiple regression analysis to test the significance of age and gender on masseter muscle thickness.

(a) Dependent variable (Y): masseter muscle thickness during contraction (mm).  $Y = 6.064 + b_1 \text{age} + b_2 \text{gender}$

Variables	Coefficient $b$	Standard error	Significance
Age	0.404	0.076	$P < 0.0001$
Gender	0.846	0.402	$P < 0.04$

Significance of the model:  $R = 0.59$ ,  $R^2 = 35\%$ ,  $P < 0.0001$ .

(b) Dependent variable (Y): masseter muscle thickness in relaxation (mm).  $Y = 6.175 + b_1 \text{age} + b_2 \text{gender}$

Variables	Coefficient $b$	Standard error	Significance
Age	0.378	0.073	$P < 0.0001$
Gender	0.806	0.386	$P < 0.04$

Significance of the model:  $R = 0.58$ ,  $R^2 = 34\%$ ,  $P < 0.0001$ .

Multiple regression analysis:  $Y = b_0 + b_1 \text{age} + b_2 \text{gender}$ .  
Independent variables: age (y), gender (0 = female, 1 = male).  
 $b_0$  = constant,  $b_1$ ,  $b_2$  = regression coefficients,  $R$  = correlation coefficient,  $R^2$  = percentage of explained variance.

**Table 2** Multiple regression analysis to test the significance of age and masseter muscle thickness (during contraction) on maxillary intermolar width.

(a) Female group ( $n = 37$ , age = 7–18 years).  $Y = 25.057 + b_1 \text{age} + b_2 \text{(MT-Co)}$

Variables	Coefficient $b$	Standard error	Significance
Age	0.120	0.123	NS
MT-Co	0.474	0.203	$P < 0.025$

Significance of the model:  $R = 0.51$ ,  $R^2 = 26\%$ ,  $P < 0.006$ .

(b) Male group ( $n = 23$ , age = 8–17 years).  $Y = 31.510 + b_1 \text{age} + b_2 \text{(MT-Co)}$

Variables	Coefficient $b$	Standard error	Significance
Age	-0.327	0.300	NS
MT-Co	0.423	0.365	NS

Significance of the model:  $R = 0.27$ ,  $R^2 = 7\%$ , NS.

Multiple regression analysis:  $Y = b_0 + b_1 \text{age} + b_2 \text{(MT-Co)}$ .  
Dependent variable (Y): maxillary intermolar width (mm).  
Independent variables: age (y), masseter thickness during contraction (MT-Co) (mm).  
 $b_0$  = constant,  $b_1$ ,  $b_2$  = regression coefficients,  $R$  = correlation coefficient,  $R^2$  = percentage of explained variance, NS = not statistically significant.

The relationship between masseter muscle thickness (both in relaxation and during contraction) and maxillary intermolar width was tested separately for males and females with age as a covariable.

### Female group

Maxillary intermolar width showed a direct, significant association with masseter thickness during contraction, whereas age was found to have no statistically significant relationship (Table 2).

A similar association was found between maxillary intermolar width and masseter thickness in relaxation. Age was not found to have any statistically significant relationship (Table 3).

### Male group

In the male group maxillary intermolar width was not related to masseter thickness, either in relaxation or during contraction (Tables 2 and 3).

## Discussion

The findings of the present study suggest that there is a significant association between masseter muscle

**Table 3** Multiple regression analysis to test the significance of age and masseter muscle thickness (in relaxation) on maxillary intermolar width.

(a) Female group ( $n = 37$ , age = 7–18 years).  $Y = 25.159 + b_1 \text{age} + b_2 \text{(MT-Re)}$

Variables	Coefficient $b$	Standard error	Significance
Age	0.145	0.124	NS
MT-Re	0.448	0.226	$P < 0.05$

Significance of the model:  $R = 0.48$ ,  $R^2 = 23\%$ ,  $P < 0.013$ .

(b) Male group ( $n = 23$ , age = 8–17 years).  $Y = 31.658 + b_1 \text{age} + b_2 \text{(MT-Re)}$

Variables	Coefficient $b$	Standard error	Significance
Age	-0.320	0.301	NS
MT-Re	0.413	0.368	NS

Significance of the model:  $R = 0.26$ ,  $R^2 = 7\%$ , NS.

Multiple regression analysis:  $Y = b_0 + b_1 \text{age} + b_2 \text{(MT-Re)}$ .  
Dependent variable (Y): maxillary intermolar width (mm).  
Independent variables: age (y), masseter thickness in relaxation (MT-Re) (mm).  
 $b_0$  = constant,  $b_1$ ,  $b_2$  = regression coefficients,  $R$  = correlation coefficient,  $R^2$  = percentage of explained variance, NS = not statistically significant.

thickness and maxillary arch width in female subjects. The multiple regression model that used masseter muscle thickness and age as independent variables could explain approximately one-quarter of the total variance in intermolar width.

In male subjects, no significant association between maxillary arch width and masseter thickness was recorded. This finding could be related to the lack of relationship between masseter muscle thickness and measurements describing the width of the face in adult males (Kiliaridis and Kålebo, 1991).

In patients suffering from myotonic dystrophy, a decreased width of the palate has been reported. This might be due to muscle weakness but also to other factors (e.g. head posture) that affect equilibrium (for review see Kiliaridis and Katsaros, 1998).

Maxillary intermolar width increases significantly in both sexes between 3 and 13 years of age, after which it remains stable in males, whereas it decreases slightly in females (Bishara *et al.*, 1997). Males have been found to have a significantly larger maxillary intermolar width than females in all age groups (Bishara *et al.*, 1997). The fact that no significant association was found between intermolar width and gender in the present study might be due to a greater intragroup variation of growth stage in the male than in the female group. This might be reflected in the greater standard deviations of intermolar width in the male than in the female group.

One of the factors influencing maxillary arch width is the growth potential of the midpalatal suture. The bone apposition rate in the midpalatal suture has been shown to be smaller in rats with decreased functional demands, whereas their maxillary arch is narrower (Yamamoto, 1996; Katsaros *et al.*, 2002). Also the greater arch width found in medieval dentitions compared with those from a modern control sample is considered to be due mainly to differences in diet and masticatory function (Harper, 1994). Besides sutural growth, differences in the transverse width of the alveolar process or in the buccopalatal inclination of the posterior teeth might also contribute to differences in maxillary dental arch width. The present findings might be related to those of Masumoto *et al.* (2001) who reported that the lower molars of skulls with a long facial configuration were more lingually inclined than in skulls with an average or short facial configuration, this difference possibly being related to variations in the functional capacity of the masticatory muscles. This might reflect a compensatory mechanism of the dental arches to offset a smaller maxillary base.

Ultrasonography was used to measure the thickness of the masseter muscle. This method has been found to be a reliable, accurate, and easily reproducible method for the study of masseter muscle thickness (Kiliaridis and Kålebo, 1991; Raadsheer *et al.*, 1994). In the present investigation, the method for recording in relaxation

was modified from that used by Kiliaridis and Kålebo (1991) with the aim of avoiding tissue compression. The thickness of the masseter muscle has a significantly positive correlation with the magnitude of bite force (Raadsheer *et al.*, 1999).

In the present study and for the age period examined, masseter muscle thickness showed a significant association with age and gender, i.e. the masseter muscle was thicker in older individuals and in males. It seems that a greater masseter muscle width develops in males during pubertal growth (Raadsheer *et al.*, 1996). Newton *et al.* (1987) showed a correlation between masseter thickness and age, examining subjects with a large age range (20–90 years of age). On the other hand, Kiliaridis and Kålebo (1991) found no such correlation when studying a group of young adults with a small age range.

The subjects enrolled in the present investigation were selected from a sample of orthodontic patients. Patients with skeletal malocclusions were excluded, since the width of their maxillary arch might differ from that of subjects with a normal skeletal relationship. Class II division 1 patients, for example, are characterized by a narrow maxillary dental arch (Berg, 1983). Patients with functional malocclusions were not taken into consideration, since the dimensions of their masseter muscles might deviate from those of normal subjects. The masseter muscle has been found to be thinner on the crossbite side than on the normal side in patients with functional lateral crossbite (Kiliaridis *et al.*, 2000).

Although it is unlikely that the minor orthodontic problems in the anterior aspect of the dental arches (maxillary, mandibular, or both) in the present sample could be associated with the maxillary arch width, a larger sample enrolled from subjects with no malocclusion would have been ideal.

## Conclusions

The findings of this study suggest that the functional capacity of the masticatory muscles should be considered as one of the factors influencing the width of the maxillary dental arch.

## Address for correspondence

Professor Stavros Kiliaridis  
Division d'Orthodontie  
Section de Médecine dentaire  
Université de Genève  
19 rue Barthélémy-Menn  
CH-211 Genève 4, Switzerland

## Acknowledgements

The authors wish to thank Professor Martin van 't Hof, University of Nijmegen for statistical advice and



Ms Maria Charalambidou for administrative assistance. This study was supported by grants from the Swedish Medical Research Council (05006).

## References

- Bakke M, Tuxen A, Vilmann P, Jensen B R, Vilmann A, Toft M 1992 Ultrasound image of human masseter muscle related to bite force, electromyography, facial morphology, and occlusal factors. *Scandinavian Journal of Dental Research* 100: 164–171
- Benington P C, Gardener J E, Hunt N P 1999 Masseter muscle volume measured using ultrasonography and its relationship with facial morphology. *European Journal of Orthodontics* 21: 659–670
- Berg R 1983 Dento-facial development between 6 and 12 years of age. Thesis, University of Oslo, Norway
- Bishara S E, Jakobsen J R, Treder J, Nowak A 1997 Arch width changes from 6 weeks to 45 years of age. *American Journal of Orthodontics and Dentofacial Orthopedics* 111: 401–409
- Dahlberg G 1940 Statistical methods for medical and biological students. Interscience Publications, New York
- Hannam A G, Wood W W 1989 Relationships between the size and spatial morphology of human masseter and medial pterygoid muscles, the craniofacial skeleton, and jaw biomechanics. *American Journal of Physical Anthropology* 80: 429–445
- Harper C 1994 A comparison of medieval and modern dentitions. *European Journal of Orthodontics* 16: 163–173
- Ingervall B 1976 Facial morphology and activity of temporal and lip muscles during swallowing and chewing. *The Angle Orthodontist* 46: 372–380
- Ingervall B, Helkimo E 1978 Masticatory muscle force and facial morphology in man. *Archives of Oral Biology* 23: 203–206
- Katsaros C, Berg R, Kiliaridis S 2002 Influence of masticatory muscle function on transverse skull dimensions in the growing rat. *Journal of Orofacial Orthopedics* 63: 5–13
- Kiliaridis S, Kälébo P 1991 Masseter muscle thickness measured by ultrasonography and its relation to facial morphology. *Journal of Dental Research* 70: 1262–1265
- Kiliaridis S, Katsaros C 1998 The effects of myotonic dystrophy and Duchenne muscular dystrophy on the orofacial muscles and dentofacial morphology. *Acta Odontologica Scandinavica* 56: 369–374
- Kiliaridis S, Katsaros C, Raadsheer M C, Mahboubi P H 2000 Bilateral masseter muscle thickness in growing individuals with unilateral crossbite. *Journal of Dental Research* 79 (special issue): 497 (Abstract)
- Kiliaridis S, Kjellberg H, Wenneberg B, Engström C 1993 The relationship between maximal bite force, bite force endurance, and facial morphology during growth. A cross-sectional study. *Acta Odontologica Scandinavica* 51: 323–331
- Masumoto T, Hayashi I, Kawamura A, Tanaka K, Kasai K 2001 Relationships among facial type, buccolingual molar inclination, and cortical bone thickness of the mandible. *European Journal of Orthodontics* 23: 15–23
- Newton J P, Abel E W, Robertson E M, Yemm R 1987 Changes in human masseter and medial pterygoid muscles with age: a study by computed tomography. *Gerodontology* 3: 151–154
- Proffit W R, Fields H W, Nixon W L 1983 Occlusal forces in normal- and long-face adults. *Journal of Dental Research* 62: 566–570
- Raadsheer M C, Kiliaridis S, van Eijden T M, van Ginkel F C, Pahl-Andersen B 1996 Masseter muscle thickness in growing individuals and its relation to facial morphology. *Archives of Oral Biology* 41: 323–332
- Raadsheer M C, van Eijden T M, van Ginkel F C, Pahl-Andersen B 1999 Contribution of jaw muscle size and craniofacial morphology to human bite force magnitude. *Journal of Dental Research* 78: 31–42
- Raadsheer M C, van Eijden T M, van Spronsen P H, van Ginkel F C, Kiliaridis S, Pahl-Andersen B 1994 A comparison of human masseter muscle thickness measured by ultrasonography and magnetic resonance imaging. *Archives of Oral Biology* 39: 1079–1084
- Ueda H M, Ishizuka Y, Miyamoto K, Morimoto N, Tanne K 1998 Relationship between masticatory muscle activity and vertical craniofacial morphology. *The Angle Orthodontist* 68: 233–238
- Ueda H M, Miyamoto K, Saifuddin M, Ishizuka Y, Tanne K 2000 Masticatory muscle activity in children and adults with different facial types. *American Journal of Orthodontics and Dentofacial Orthopedics* 118: 63–68
- van Spronsen P H, Weijs W A, Valk J, Pahl-Andersen B, van Ginkel F C 1991 Relationships between jaw muscle cross-sections and craniofacial morphology in normal adults, studied with magnetic resonance imaging. *European Journal of Orthodontics* 13: 351–361
- van Spronsen P H, Weijs W A, Valk J, Pahl-Andersen B, van Ginkel F C 1992 A comparison of jaw muscle cross-sections of long-face and normal adults. *Journal of Dental Research* 71: 1279–1285
- Weijs W A, Hillen B 1986 Correlations between the cross-sectional area of the jaw muscles and craniofacial size and shape. *American Journal of Physical Anthropology* 70: 423–431
- Yamamoto S 1996 The effects of food consistency on maxillary growth in rats. *European Journal of Orthodontics* 18: 601–615



Copyright of European Journal of Orthodontics is the property of Oxford University Press / UK and its content may not be copied or emailed to multiple sites or posted to a listserv without the copyright holder's express written permission. However, users may print, download, or email articles for individual use.